

HIFUSHAPE



GLOBAL
LEADER



BODY CONTOURING MARKET

The dangers of excessive fat accumulation

Overweight (BMI > 25kg/m²) or obesity (BMI > 30kg/m²)

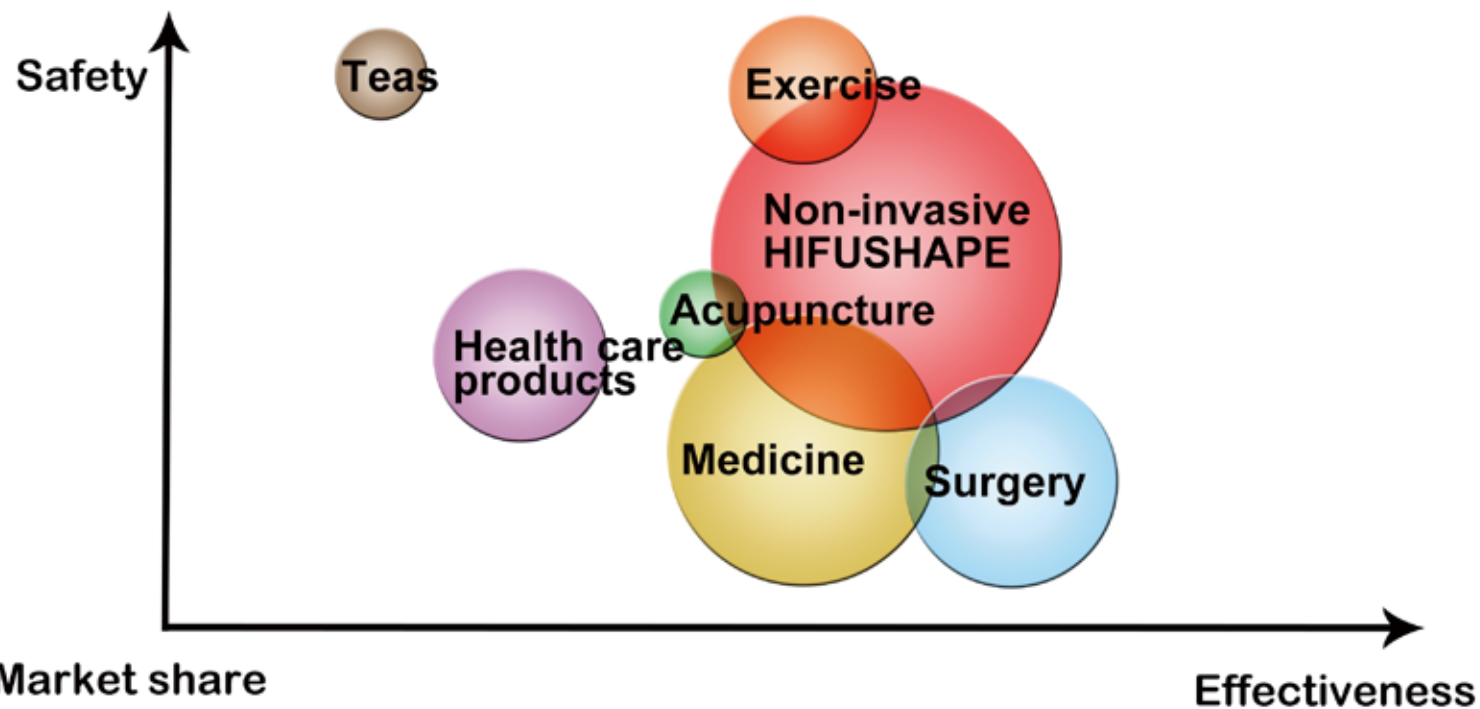
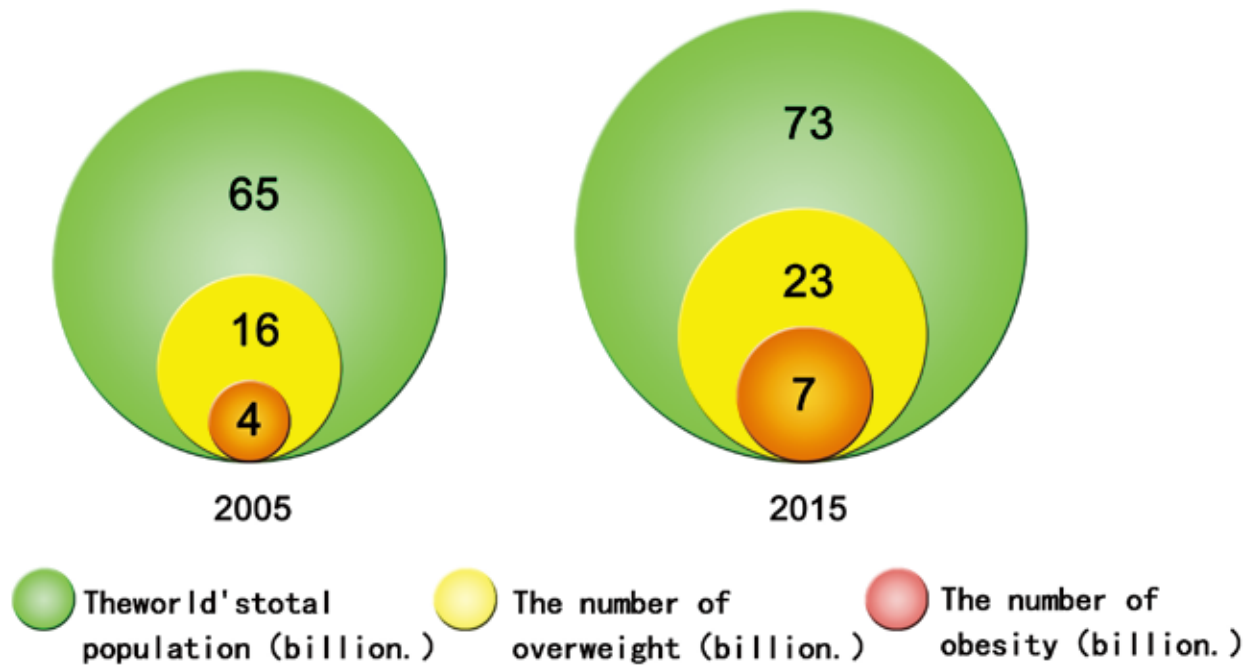
Poor figure, causing cardiovascular disease, diabetes and other metabolic disorders; affecting health, reducing life expectancy.

The World Health Organization reports that obesity, alcohol, drugs, and AIDS have tied for four major public health problems in the world.

Compared with other slimming methods,

Non-invasive HIFUSHAPE perfectly combines safety and effectiveness of treatment, thus it has a very broad market prospect.

Using HIFUSHAPE for non-invasive body contouring has become a leading new trend of next generation body contouring technology in medical plastic industry.



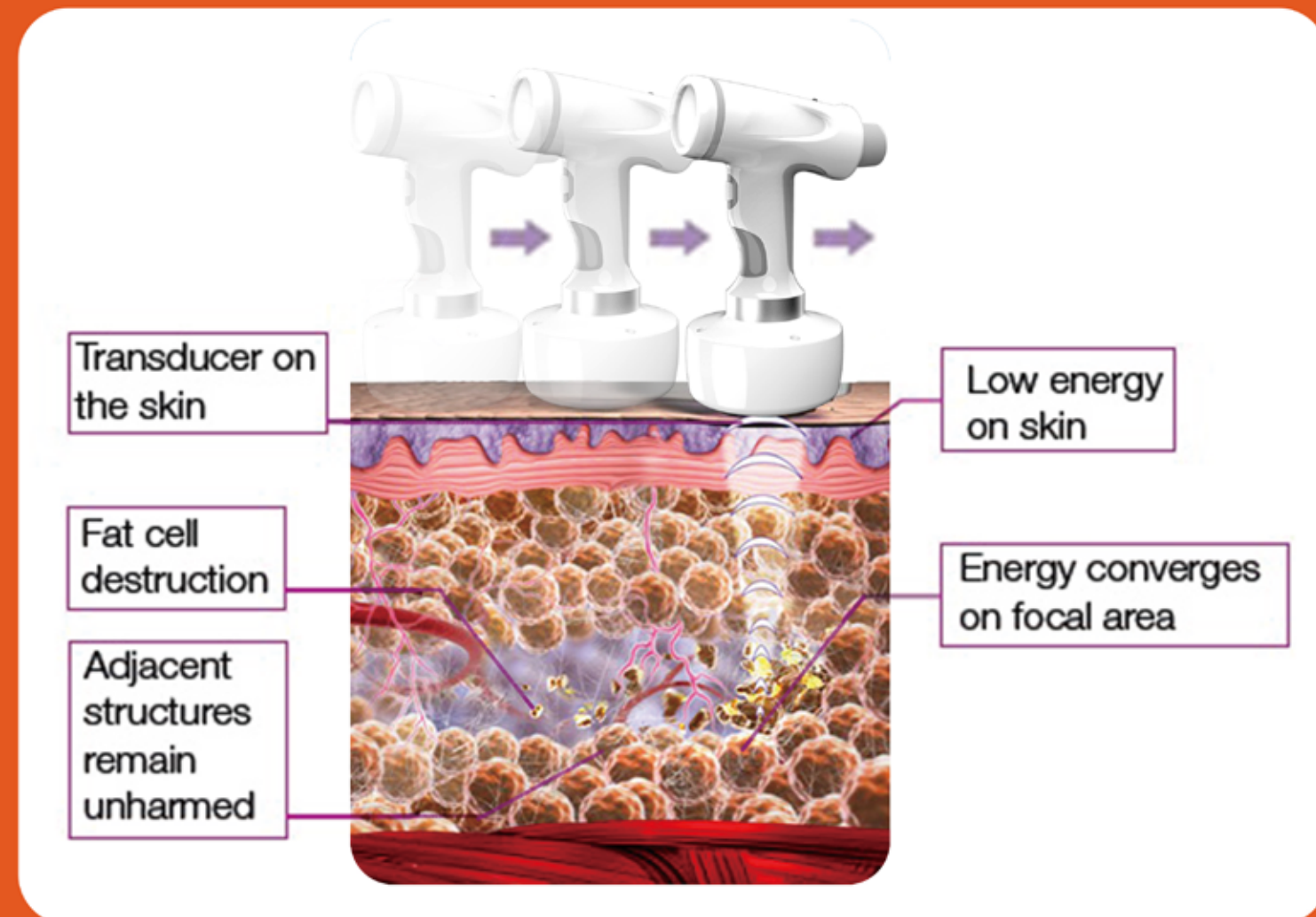


PRINCIPLE OF TREATMENT

HIFUSHAPE adopt High Intensity Focused Ultrasound technology, penetrates focused and volumetric ultrasonic energy at precise depth (1.2 cm) in subcutaneous fat layers targeting fat tissue causing a non-thermal effect.

The technology is a US FDA approved, non-invasive body shaping device that uses pulsed, focused ultrasound to mechanically (non-thermally) and selectively destroy fat cells at a designated focal point in the subcutaneous fat tissue without harming the skin, blood vessels, nerves or connective tissue, demonstrating measurable results in as little as 2 weeks.

This unique technology answers the growing patient demand for a non-invasive body shaping solution that offers no downtime and without the complications associated with surgery.





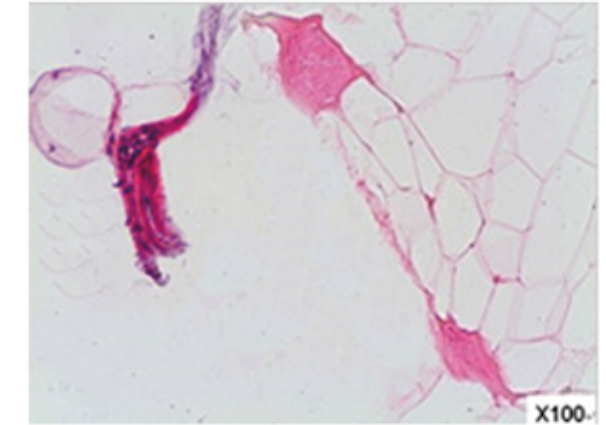
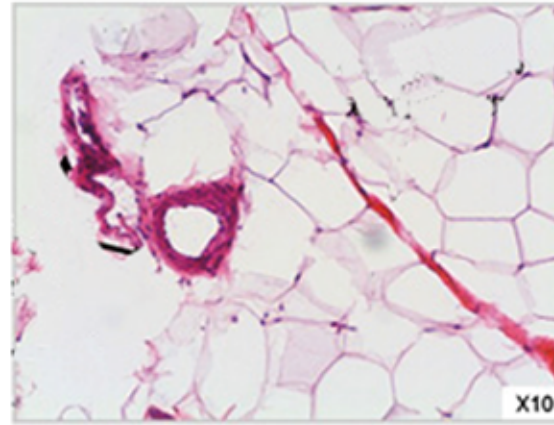
CLINICAL TEST

Focused:

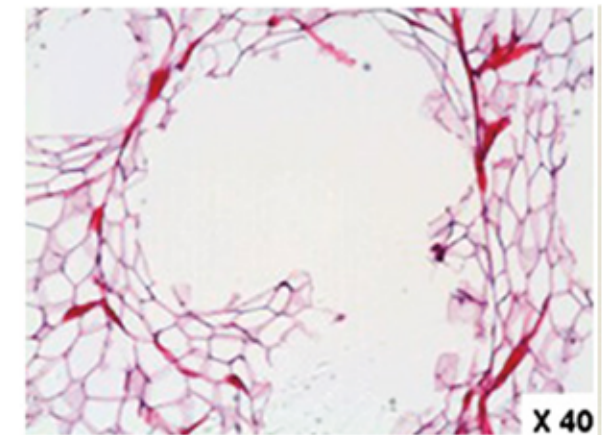
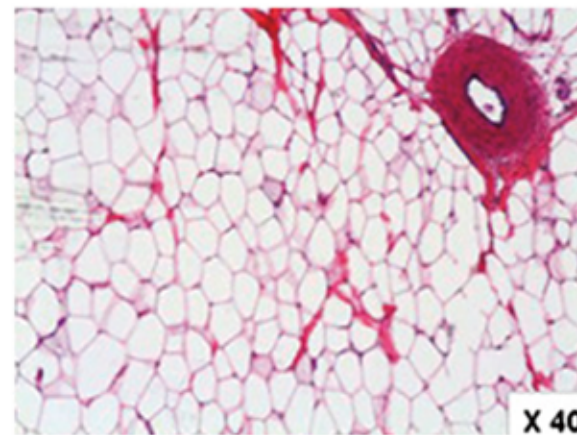
Ultrasound energy is designed to precisely converge into a confined focal volume, targeting only subcutaneous fat at a controlled depth.

Pulsed:

Energy is delivered in bursts resulting in a mechanical non-thermal effect that only targets tissue most susceptible to mechanical disruption keeping nerves, vessels and muscles safe and intact.



Histology confirms HIFUSHAPE technology instantly selectively destroys fat cells alone.



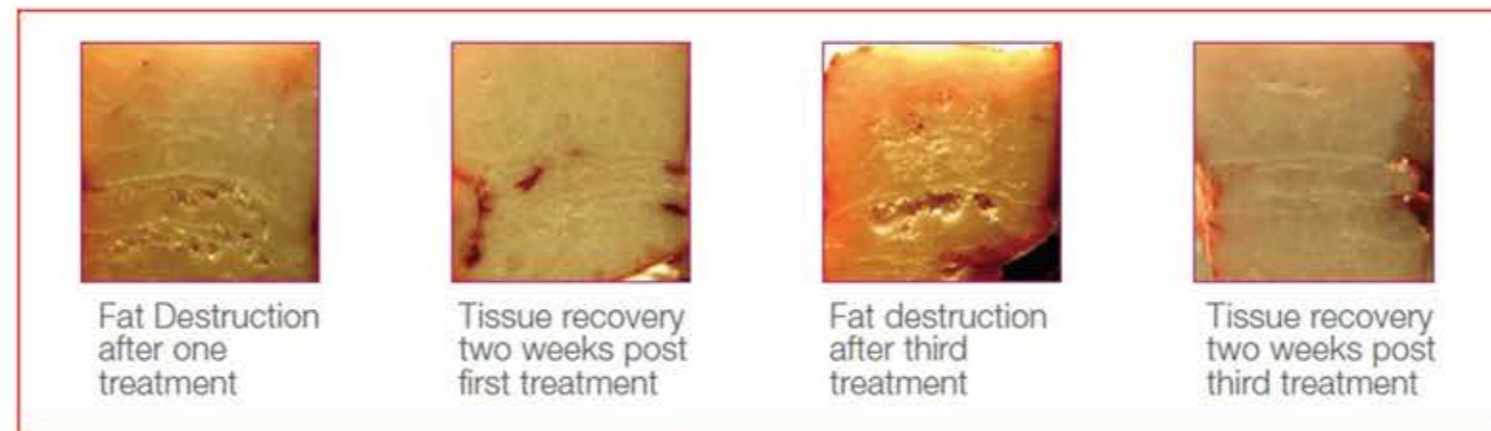
Fat cell appearance under microscope before & after treatment

CLINICAL TEST

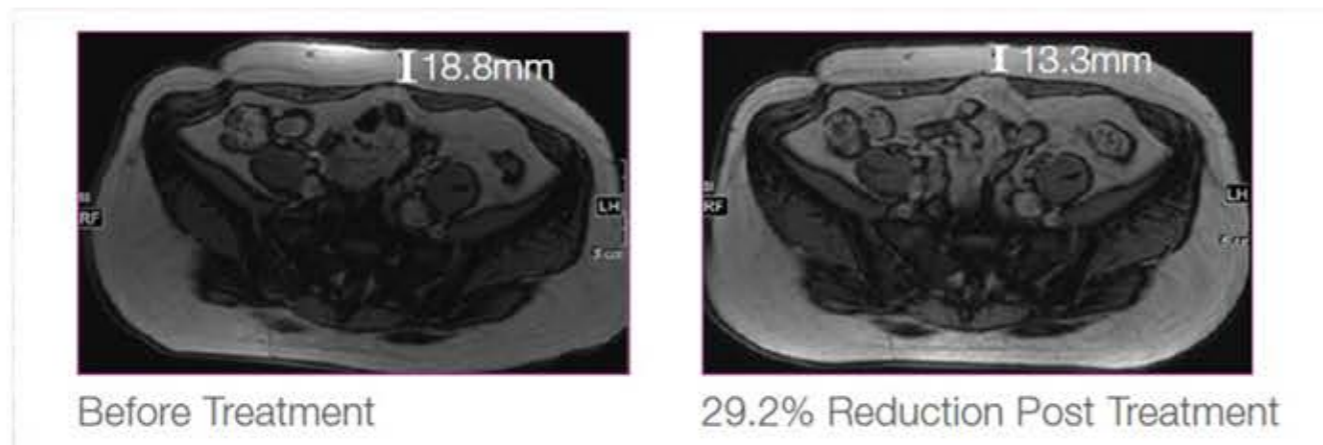
HIFUSHAPE is not only more selective; it delivers results faster, too. HIFUSHAPE produces measurable outcomes in as little as two weeks, compared with other technologies that can take up to three to four months to produce results.

Simply put, there's no other non-invasive body shaping procedure that can produce these results so quickly.

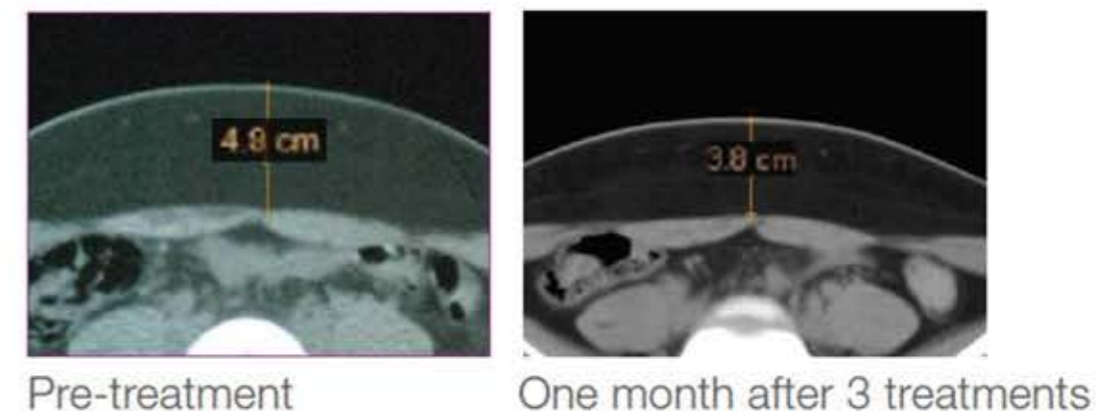
Because HIFUSHAPE selectively focuses on fat, tissue recovery is faster than with other treatments.



Fat thickness reduction by an MRI measurement



CT scans demonstrate fat reduction



TREATMENT SCOPE

Body slimming, body shaping, fat reduction for abdomen, buttocks, waist, thigh etc.



Before



Post 3 treatments -7.9 cm



Before



Post 3 treatments -4 cm



Before



Post 3 treatments -7.9 cm



ADVANTAGES

- ▶ Clinically proven to be safe and effective with over 15 peer-reviewed papers and book chapters published
- ▶ Complete treatment protocol in just 4 weeks - 3 treatments at two-week intervals
- ▶ Over 96% of patients experienced a measurable reduction and 94% of patients were satisfied with their results
- ▶ Over 300,000 treatments performed worldwide
No bruising, swelling or downtime
- ▶ Comfortable, “walk-in, walk-out” 45 minute procedure
- ▶ Unique business model ensuring an exceptional ROI



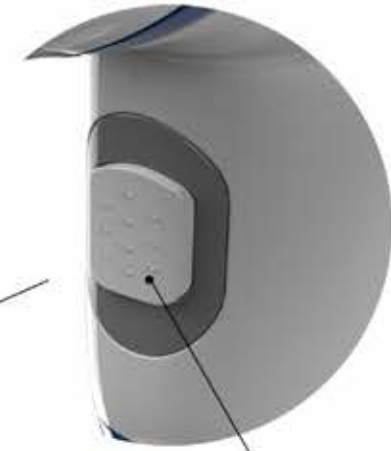
ADVANTAGE



Decorative ring increases the aesthetic sense of the hand piece.



LED working indicator light



Non-slip button



Aluminium alloy decorative ring improves the metallic sense and feel of the hand piece.

The design of the handle

The design of the handle is based on the theory of ergonomics, convenient to hold and lift up or down. The top of the handle and the handgrip form an angle of 80°, combined with the arc transition under the top of the handle, which can make sure a comfortable touch when holding the handgrip, and that operator can hold the handle stably with no need for high grip strength.



Replaceable water filter

Ensure the working life and stability of the handle.



Medical special pipe

Germany original imported medical special pipe(diameter 19mm. length 1800mm). humanized pothook designed to avoid the pipe droop to touch the floor.



Screen head design

Adopting 10 inch screen with rotatable screen head design, which is convenient to the customers with different height to operate the machine by standing or sitting. The rotating angle can reach 80°.



INTRODUCTION

Split colorful standing stools design

Double Z-shape design, connect to the main body with screws, various colors optional. Shape "Z" comes from "Zeal for you", symbolizes the crazy to slimming.



PARAMETER TABLE

Input power	500W
Output power	150W
Output spot size	1 cm ²
Focal	1.2cm (from skin to focal point)
Frequency	250Khz \pm 2%
Energy level	1~10continuously adjustable
Pulse width	0.5s
Delay time	0.5~3s adjustable
Cooling system	Wind+Water
Input voltage	AC 220V 50Hz,AC 110V 60Hz
Dimensions(cm)	93*35*45
Net weight	30kg